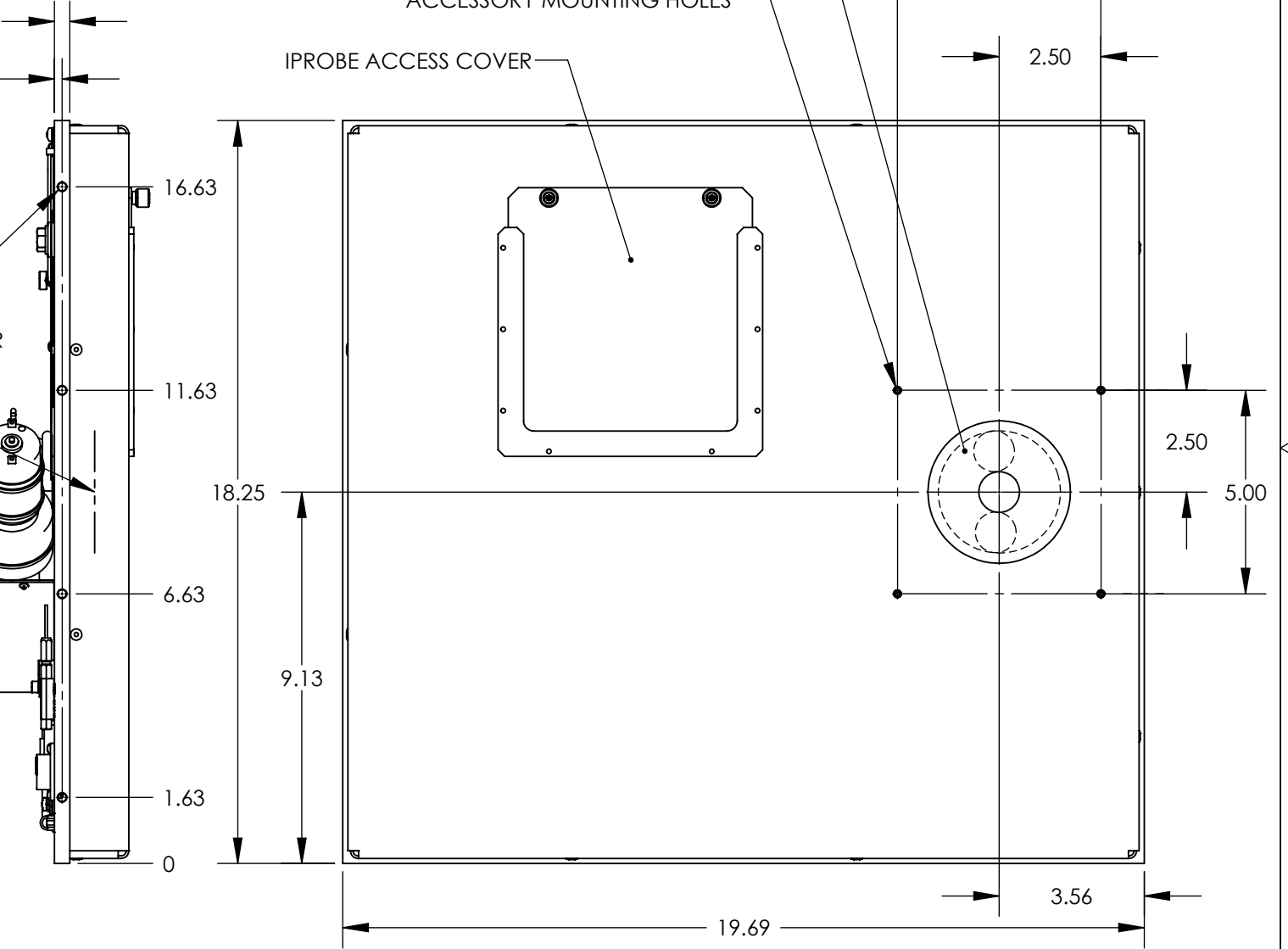
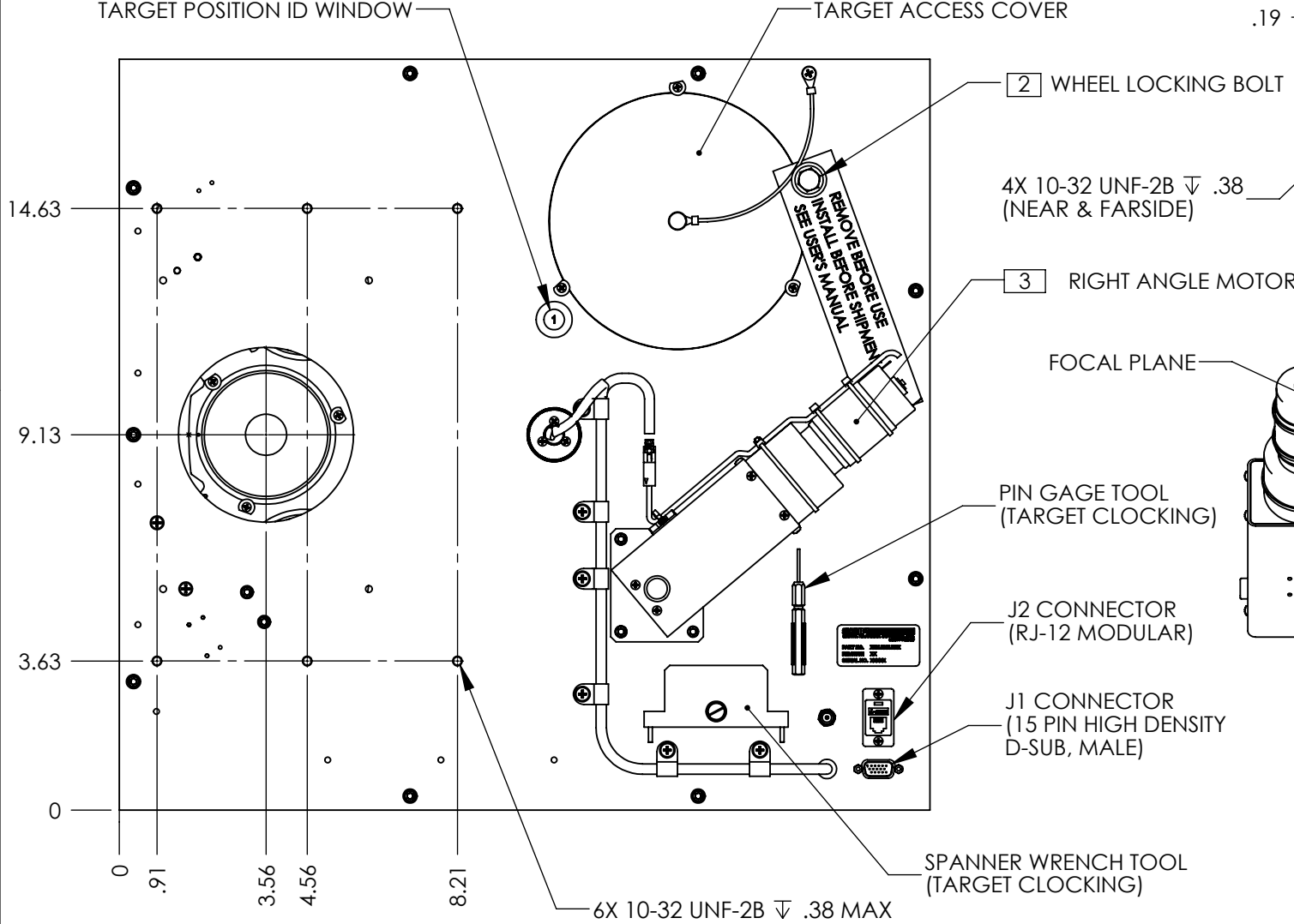
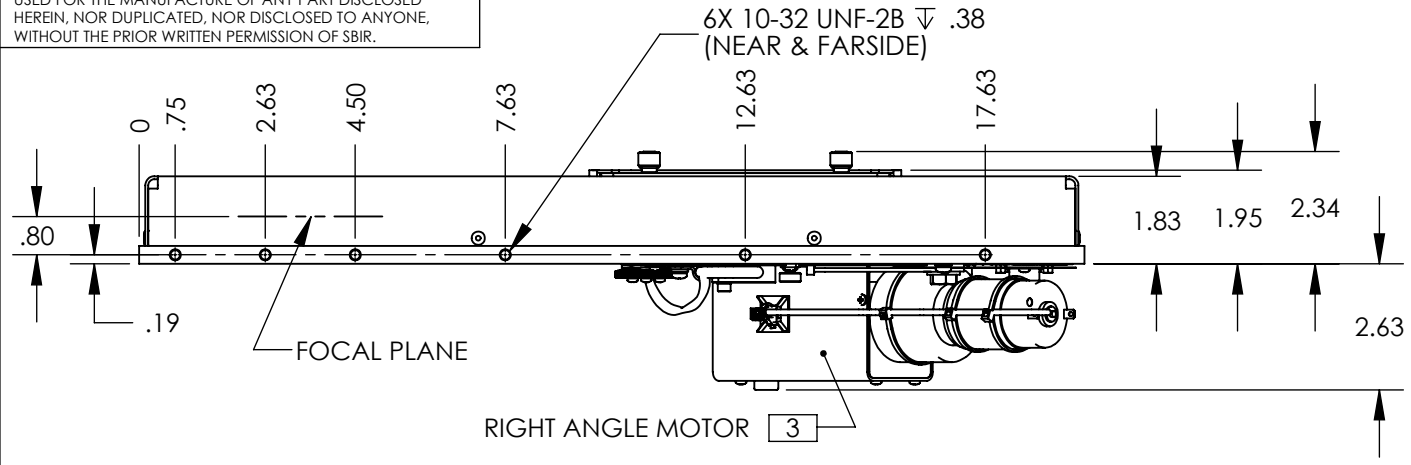


THIS DRAWING CONTAINS PROPRIETARY INFORMATION OF SANTA BARBARA INFRARED INC. (SBIR) AND MAY NOT BE USED FOR THE MANUFACTURE OF ANY PART DISCLOSED HEREIN, NOR DUPLICATED, NOR DISCLOSED TO ANYONE, WITHOUT THE PRIOR WRITTEN PERMISSION OF SBIR.

DRAWN	CHECKED	RELEASED	DATE	REVISED PER ECO	REV



NOTES: UNLESS OTHERWISE SPECIFIED

- APPROXIMATE WEIGHT, WITHOUT TARGETS: 25 LBS.
- REMOVE WHEEL LOCKING BOLT PRIOR TO OPERATION. REINSTALL WHEEL LOCKING BOLT PRIOR TO SHIPMENT.
- RIGHT ANGLE DRIVE MOTOR IS STANDARD. STRAIGHT (TALLER PROFILE) DRIVE MOTOR NOT AVAILABLE.
- TARGETS MAY HAVE SINGLE 3 INCH TARGET PATTERN OR 3 EACH SMALLER 1 INCH TARGET PATTERNS. TARGET MASK ENGAGES INTO POSITION ONLY FOR 1 INCH TARGET PATTERNS.

UNLESS OTHERWISE SPECIFIED DIMENSIONS ARE IN INCHES TOLERANCES ARE ± .XX .01 .XXX .005 .XXXX .0005 FRAC. 1/16 ANG. 1/2 DO NOT SCALE FROM DRAWING	DRAWN	D. Monk	DATE	1-14-13
	CHECKED		DATE	
	RELEASED		DATE	
	RELEASED PER ECO NO.	051721		
	SCALE	1:4	SIZE	B

SBIR
SANTA BARBARA INFRARED, INC.
 SANTA BARBARA, CA. 93103 a HEICO company

CAGE CODE: 0B0B2

TITLE
DOC,OUTLINE,TGT WHL,36 POS,1.0/3.0 INCH

NUMBER 319-001-171 SHEET 1 OF 1 REV NC