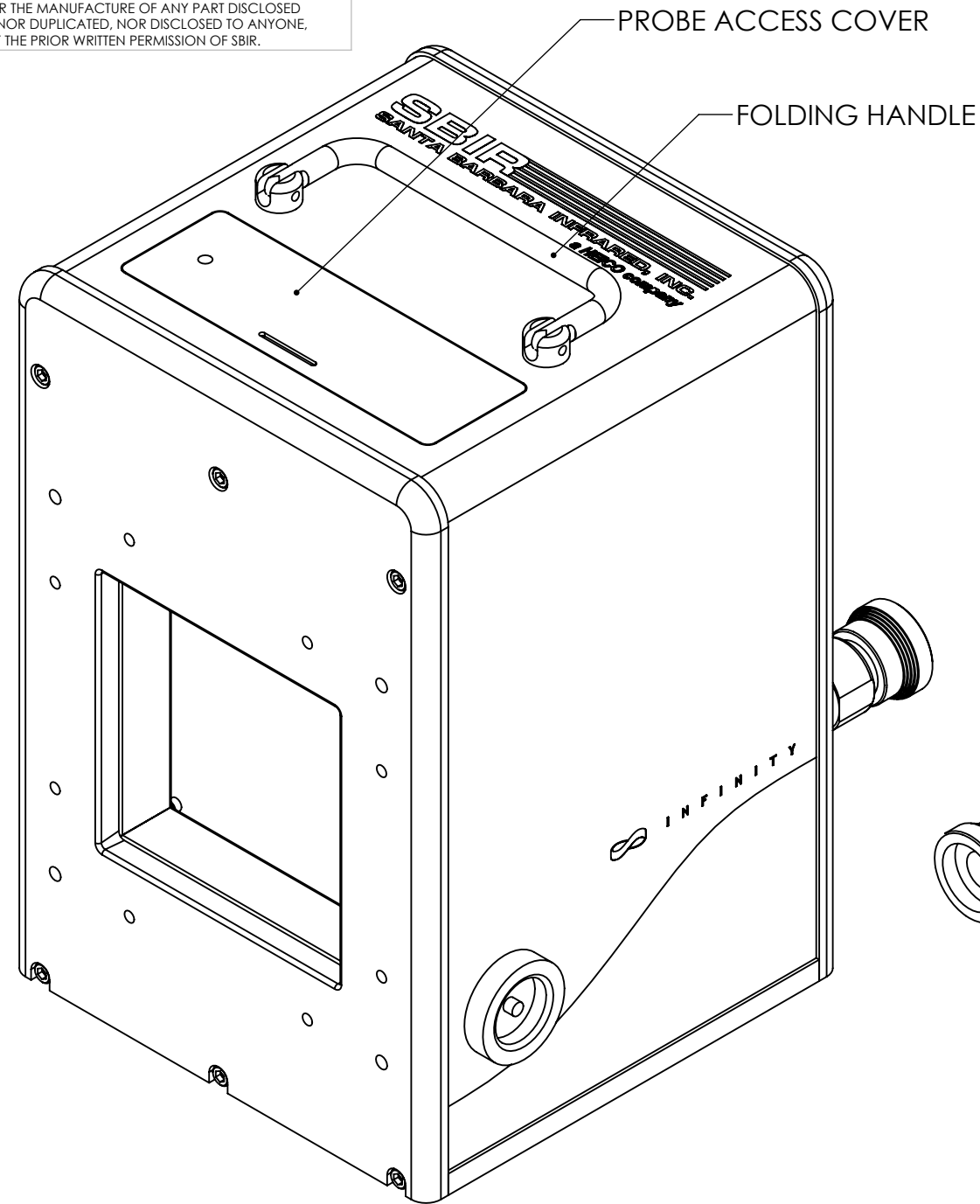
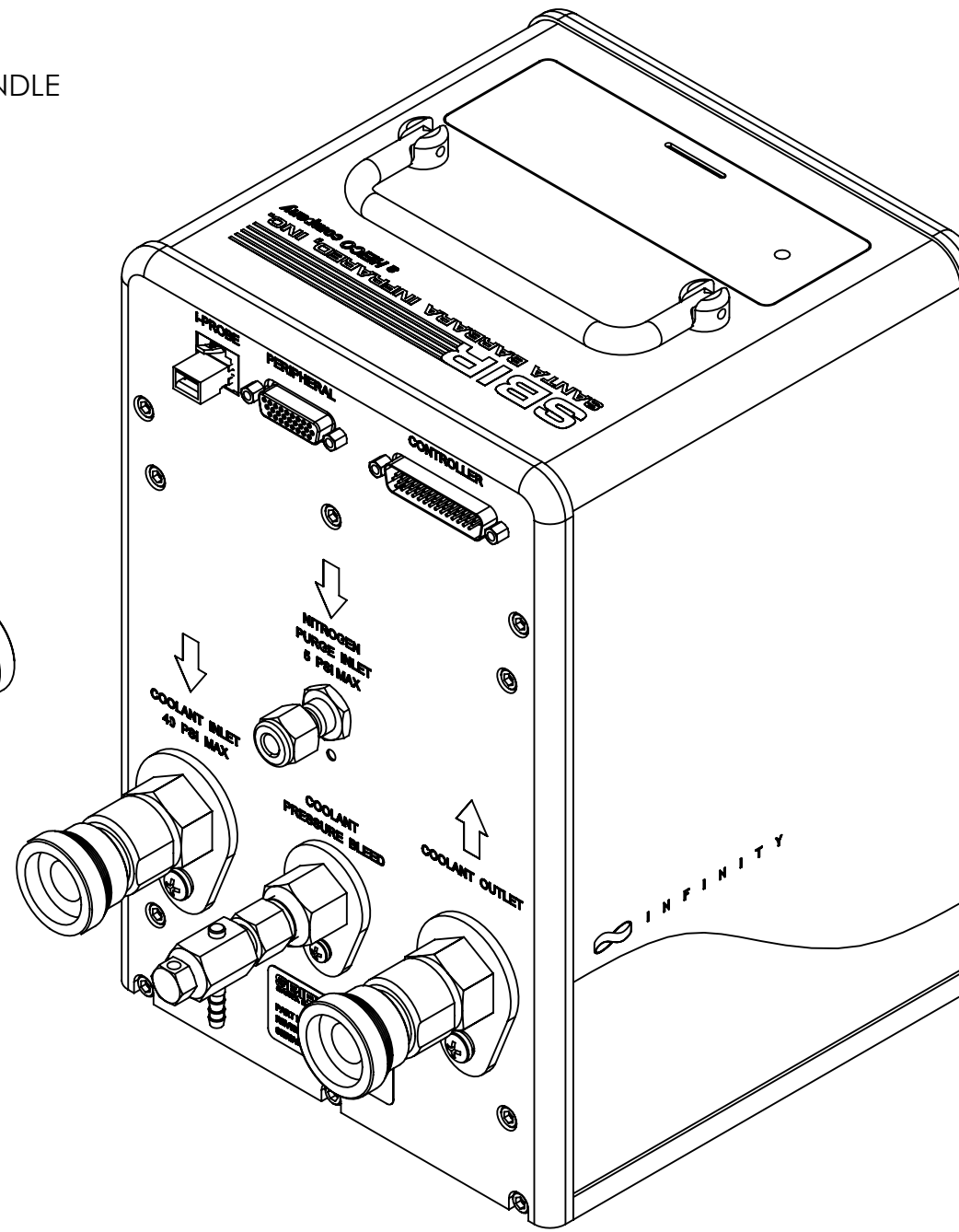


THIS DRAWING CONTAINS PROPRIETARY INFORMATION OF SANTA BARBARA INFRARED INC. (SBIR) AND MAY NOT BE USED FOR THE MANUFACTURE OF ANY PART DISCLOSED HEREIN, NOR DUPLICATED, NOR DISCLOSED TO ANYONE, WITHOUT THE PRIOR WRITTEN PERMISSION OF SBIR.

DRAWN	RELEASED	DATE	REVISED PER ECO	REV



FRONT ISOMETRIC VIEW

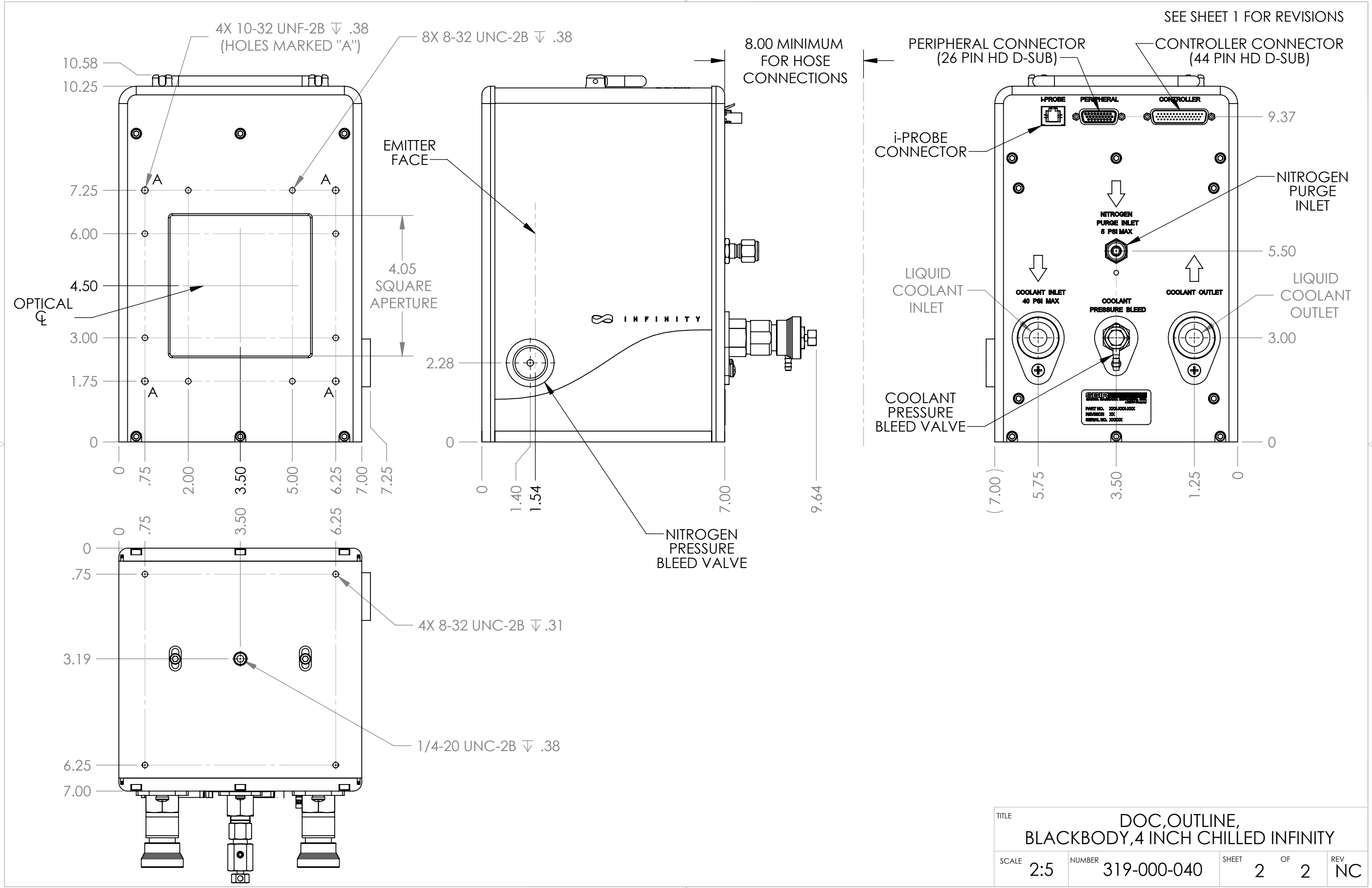


REAR ISOMETRIC VIEW

NOTES: UNLESS OTHERWISE SPECIFIED

1. ESTIMATED WEIGHT, WITHOUT COOLANT (DRAINED): 22 LB./10 KG.
2. SEE DRAWING NO. 600-214 FOR INSULATED QUICK DISCONNECT COOLANT HOSE ASSEMBLY THAT MATES TO THIS BLACKBODY.
3. NITROGEN PURGE INLET IS 1/4" O.D. TUBE COMPRESSION FITTING, 5 PSI MAXIMUM.
4. COOLANT PRESSURE BLEED VALVE HAS 1/8 I.D. HOSE BARB FITTING.

MATERIAL	UNLESS OTHERWISE SPECIFIED DIMENSIONS ARE IN INCHES TOLERANCES ARE ±	DRAWN D. Monk	DATE 2-26-08		
	.XX .01	CHECKED	DATE		
	.XXX .005	RELEASED	DATE	TITLE DOC, OUTLINE, BLACKBODY, 4 INCH CHILLED INFINITY	
	.XXXX .0005	RELEASED PER ECO NO.	046826		
FRAC. 1/16	ANG. 1/2	SCALE	1:2	NUMBER	319-000-040
NEXT ASSY	USED ON	APPLICATION			



TITLE				
DOC, OUTLINE, BLACKBODY, 4 INCH CHILLED INFINITY				
SCALE	NUMBER	SHEET	OF	REV
2:5	319-000-040	2	2	NC